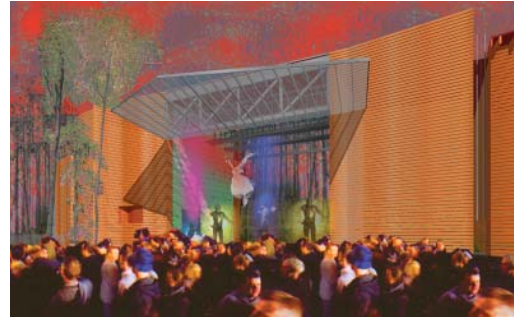


# EVENT FOREST - AMPHITHEATER FOR A STATE PARK

SALUDA SHOALS STATE PARK, SOUTH CAROLINA



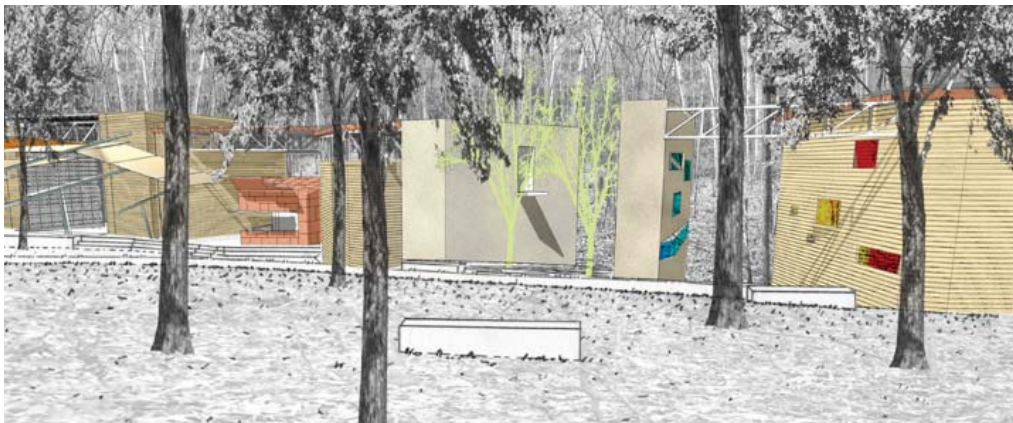
## ***Project Description***

Creating a theater in the forest rather than an object in the landscape is the conceptual goal of this award-winning design. CMG's approach to this international competition challenges and redefines traditional relationships between building and landscape. The theater building occupies the forest much in the same way as a fallen tree: it is at once continuous and fragmented; it is unmistakably a disturbance in the landscape, but without it the forest cannot be appreciated quite the same.

The amphitheater is situated as an intervention that must negotiate the site watershed and drainage. Consequently, the amphitheater lawn becomes a controlled flood meadow during high water events, amplifying the presence of water and raising awareness about the forest hydrology.

## ***Client***

Irmo Chapin Recreation Commission & Saluda Shoals State Park



# EVENT FOREST - AMPHITHEATER FOR A STATE PARK

SALUDA SHOALS STATE PARK, SOUTH CAROLINA

